

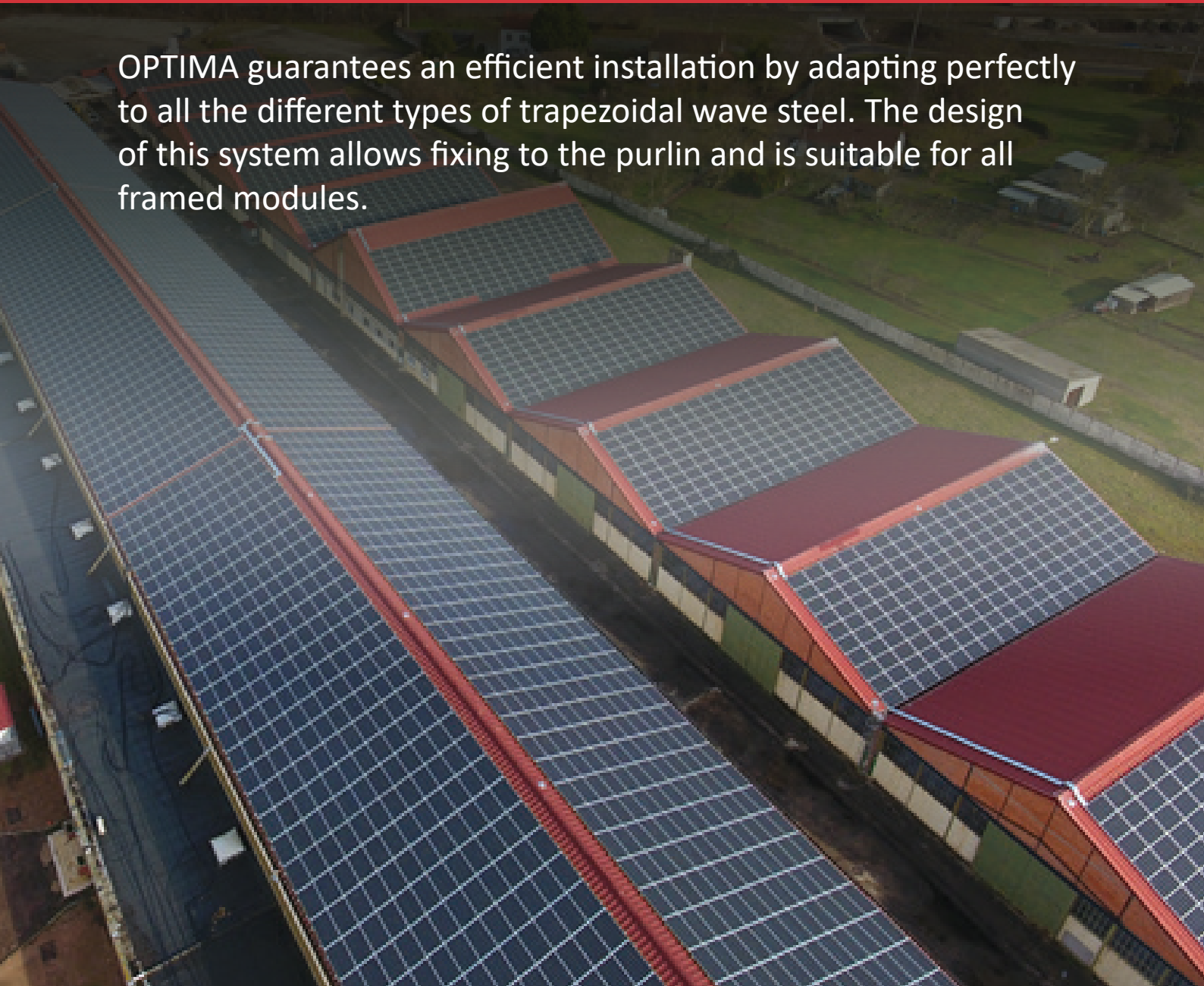
ADIWATT

Le photovoltaïque, une histoire d'experts

SOLUTION FOR TRAPEZOIDAL WAVE ROOF FIXED TO THE BUILDING STRUCTURE

OPTIMA

OPTIMA guarantees an efficient installation by adapting perfectly to all the different types of trapezoidal wave steel. The design of this system allows fixing to the purlin and is suitable for all framed modules.



 La Jubarderie, 41 270 Fontaine Raoul

 info@adiwatt.com

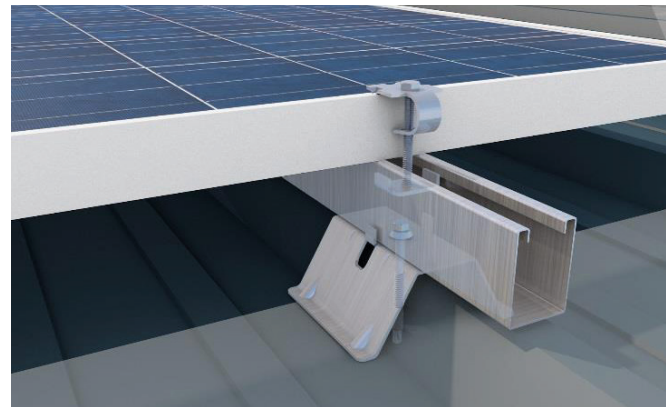
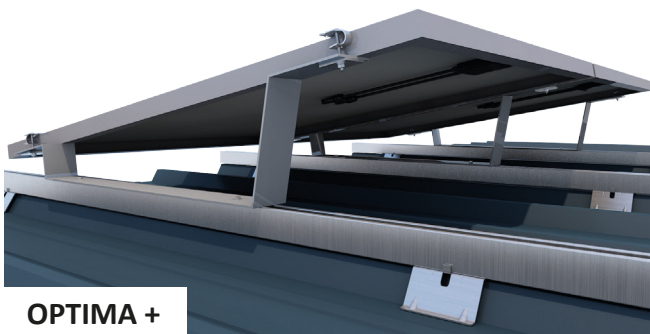
 02-54-23-39-90



Special features

- The OPTIMA System can be installed without drilling of the roof. The system's jumper OPTIMA with its sealing gasket fits to the different trapezoidal waves of the tank, and fixed in place of the existing jumper.
- Fixing to the purlin provides better stability of the photovoltaic system without force applied on the cover
- The system is applicable in cyclonic zone with 3 rails per column.

- The OPTIMA+ option optimises the orientation of your modules to ensure a better production of energy.
- OPTIMA offers a high-performance ventilation of 9.6 cm underneath the modules and ensures excellent productivity as well as a longer service life photovoltaic modules.
- Our solutions are designed and manufactured in France.



Technical characteristics

Application area	Pitched metal sheet roofing / trapezoidal wave steel roof
Roof slope	2.5° to 45°
Fixation	Into the purlin : steel / wood / concrete
Purling slope spacing	< 2.0 m (more : please contact us)
Material	Steel with +ZM310 coating according to standard EN10346 (Magnelis® or other)
PV module features and guidance	Framed / Landscape mode
Screws and bolts materials	Stainless steel or zinc-plated
Grounding	LCIE test report
Guarantee	10 years
Certification	ETN (french)