

Technical datasheet

PROFIL EVOLUTION

The AdiWatt Profil Evolution® process combines framed photovoltaic modules with a specific mounting system for installation on roofs or carports in portrait or landscape mode.

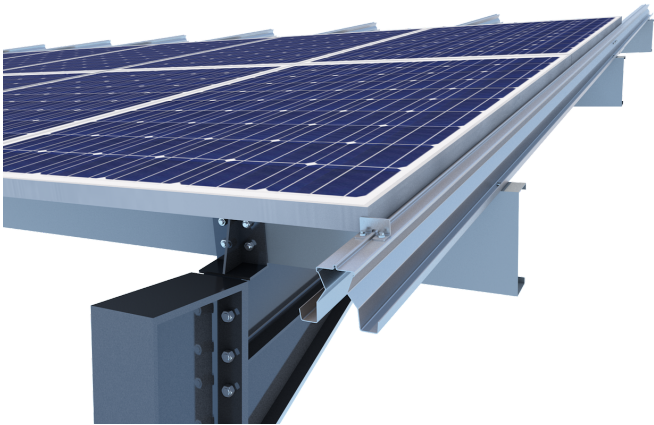


Technical features

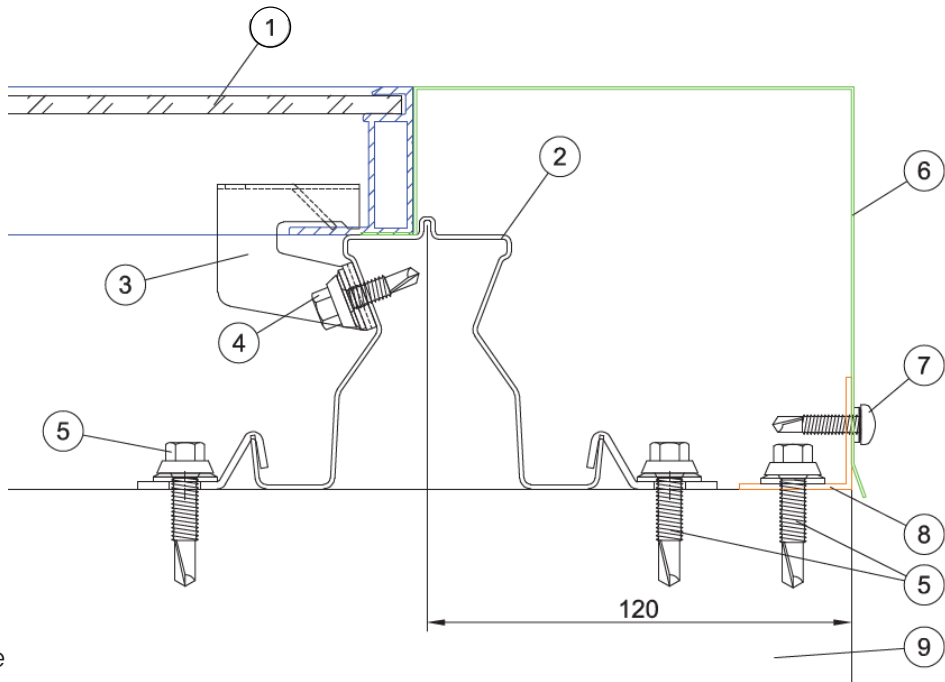
Metal	Steel + ZM310
Field of use	New or existing roof - Carports - Flat roof
Installation area	Low and medium hygrometry - Cyclonic zone compatible
Maximum installation altitude	900 m
Maximum tilt	5° to 20°
Installation and fastening of the modules	Slide-in installation and fastening from below
Modules	Framed with frame return - Portrait or landscape
Space between purlins	3 m max (according to project specifications, might be less)
Waterproofing	Draining rails and inter-module gutters

System parts

DESIGNATION	ADIWATT REFERENCE
Module fixation clamp	EVOCLAMP & EVOCLAMP 47
Evolution fishplate	EVOECLI
Clip	EVOFIX
Evolution rail	EVOG*xx*xxxxx*ACIER*ZM310
Standar Evo stop	EVOSTOP*ZM310
Triangular Evo stop	EVOSTOP
Inter-module gutter	NONE



System layout



- 1.PV module
- 2.Evolution rail
- 3.Clamp
- 4.Self drilling screw for the rail
- 5.Self drilling screw for the purlin
- 6.Sides covering
- 7.Self drilling screw for the covering
- 8.Angle bracket
- 9.Purlin