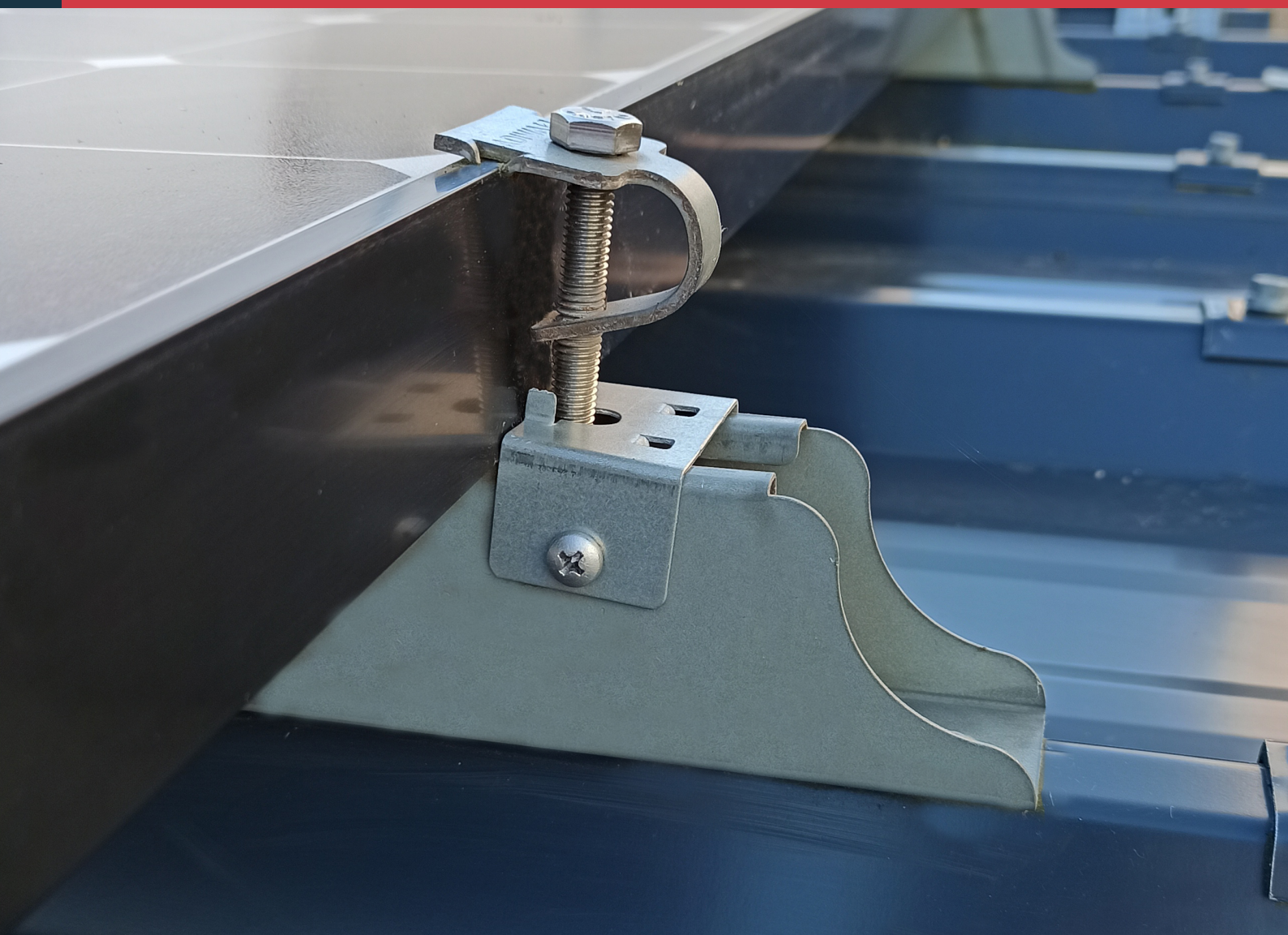


SOLUTION FOR STEEL ROOFING

Prima

AdiWatt simplifies the fastening system of photovoltaic panels with PRIMA, a universal fixing system.



© La Jubarderie, 41270 Fontaine Raoul

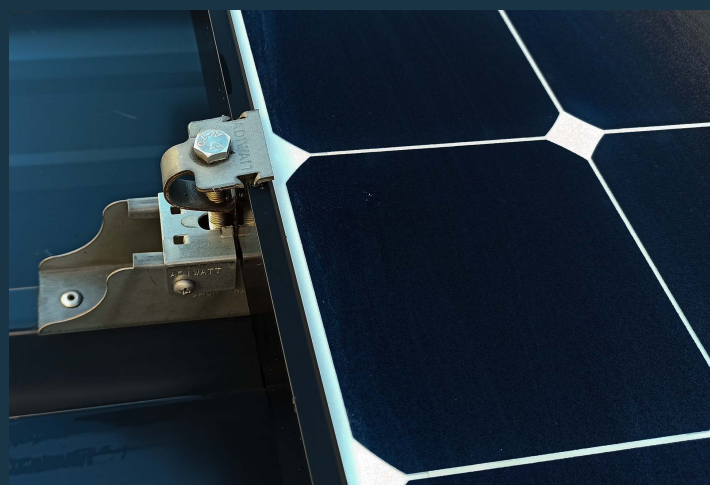
✉ info@adiwatt.com ☎ +33 2-54-23-39-90



ISO 9001

Special features

- Thanks to its two options for fixing : waterproof rivets or self-driving screws the Prima system is assembled without difficulties and with full safety.
- Prima fastening system reduces installation time. So simple it can be handled by one person.
- Cardboard delivery of the universal clamp and the pre-drilled short rails assure you optimized logistics and simplified storage.
- Prima is a waterproof system. Ventilation under the solar panel is up to 9.6cm to better the productivity and the lifespan of your installations.
- Our solutions are designed and manufactured in France



Technical characteristics

Field of application	Steel roof from 0.75**mm in accordance with DTU 40.35	
Roof tilt	5° to 30°	
Weather resistance	Wind region 1 and 2* - Snow region A1* and A2*	
Altitude	900 m maxi	
Purlin spacing	< 1.8m	
Type of modules & Orientation	Framed - Landscape format - Inter-module spacing 5-20mm - Clamping area according to manual	
Fixing	Rivets or Stainless steel self-drilling screws	
Material	Steel ZM310 Magnelis®	
Grounding	VERITAS test report	
Certification	ETN	

* Others: consult us ** 0.63mm : consult us

Our sales team is at your disposal for the study of your projects