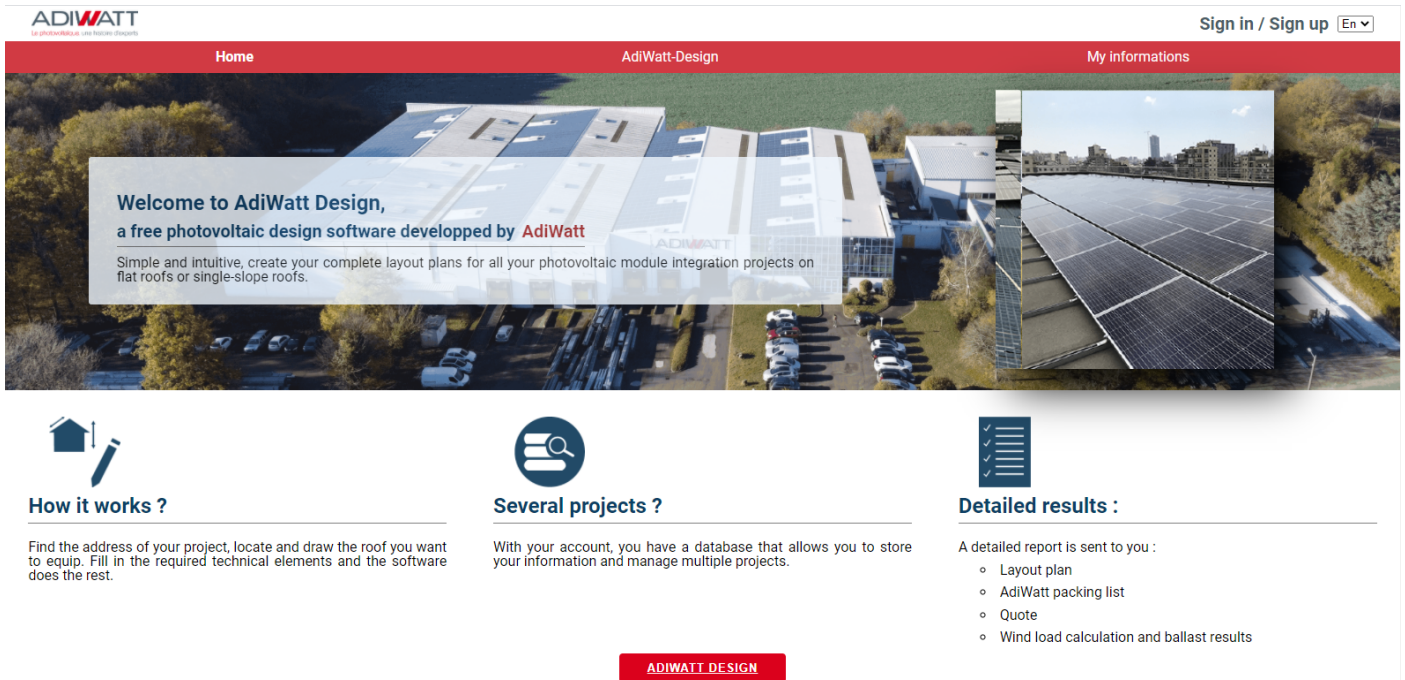


USER GUIDE

AdiWatt-Design - Flat roof



Welcome to AdiWatt-Design !

1

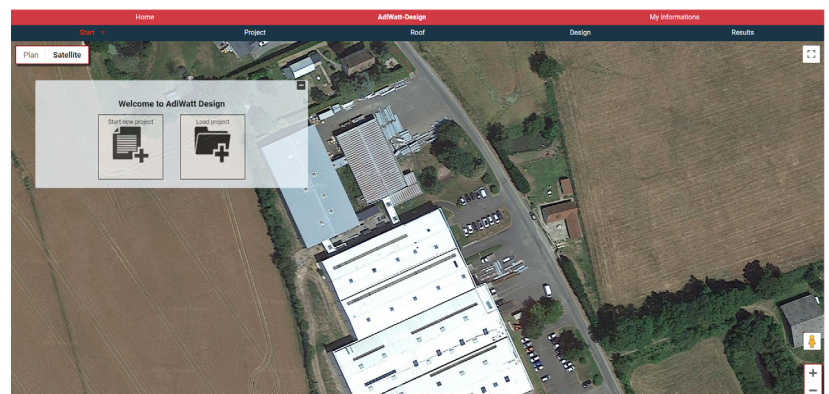
Login or register if you don't have an account yet. Make sure you enter a valid email address, an activation link will be sent to you.

Once logged in, click on the «AdiWatt-Design» button on the home page to get started.

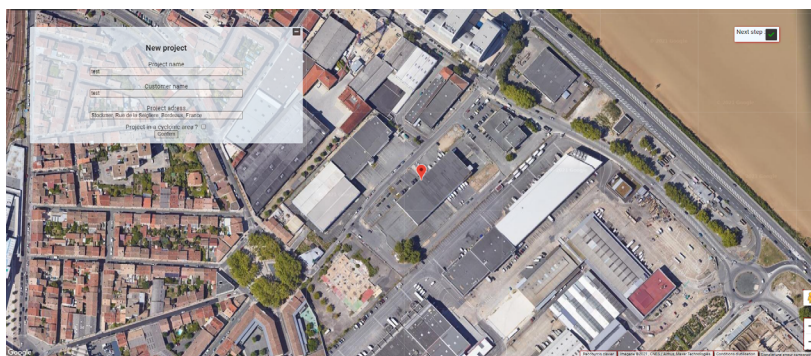
The screenshot shows two side-by-side forms. The left form is titled 'Login' and has fields for 'Username' and 'Password', with a 'Forgot your password ?' link and a 'Connect' button. The right form is titled 'Create an account' and has fields for 'Username', 'Last name', 'First name', 'Company Name', 'Phone', 'Mail address', 'Confirm email address', 'Password', and 'Confirm password'. It also includes a password strength note and a checkbox for terms of service, with a 'Sign up' button.

2

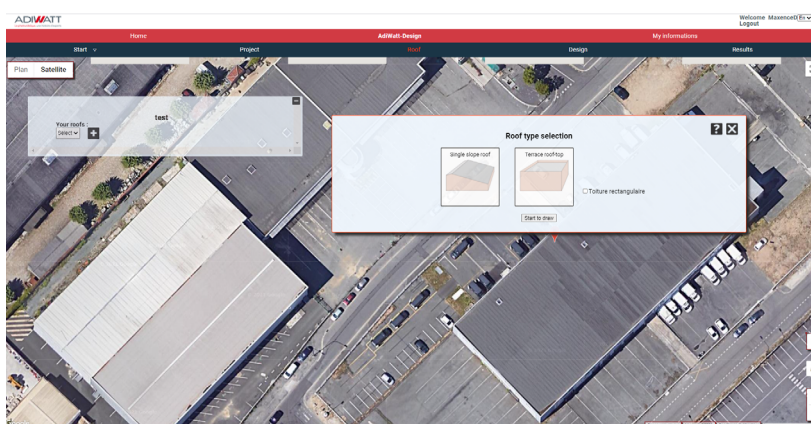
2 options are available to you, take over a project saved in your database to complete it, modify it... Or simply dimension a new project. Simply click on «Start a new project».



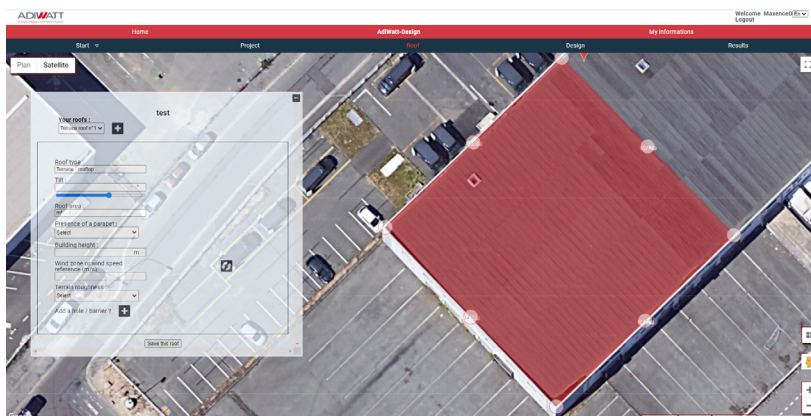
3 Fill in the fields and enter the address of the project. AdiWatt-Design works with Google Maps, this will allow you to work on the right roof. In case your project is located in hurricane zone, select «hurricane zone», this will induce the addition of material for the supply list. Validate and start working.



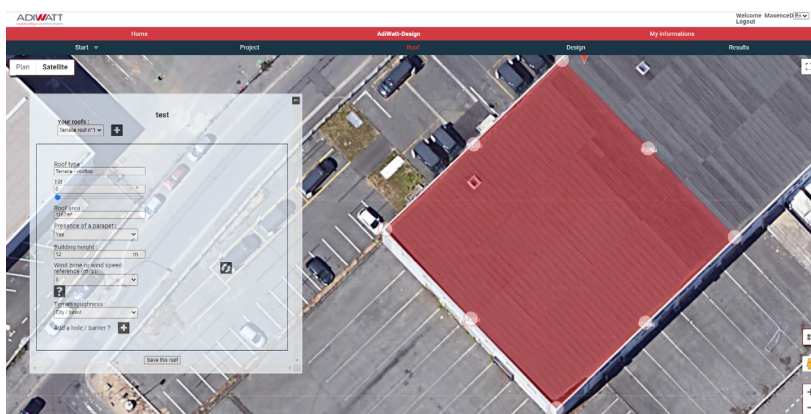
4 Click on the «+» button to open the roof type selection window. Choose the corresponding roof type and click on «start drawing». For a square or rectangular roof, check the appropriate box and proceed to step 8.



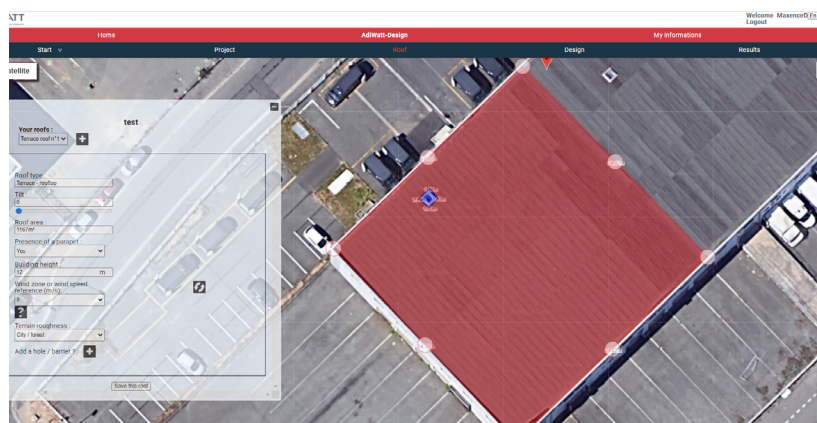
5 You must now design your roof. Simply point your cursor on a point and click to draw the contours of your roof. When your roof is complete, it will appear in red with the dimensions? You can change its configuration at any time using the white resizing points.



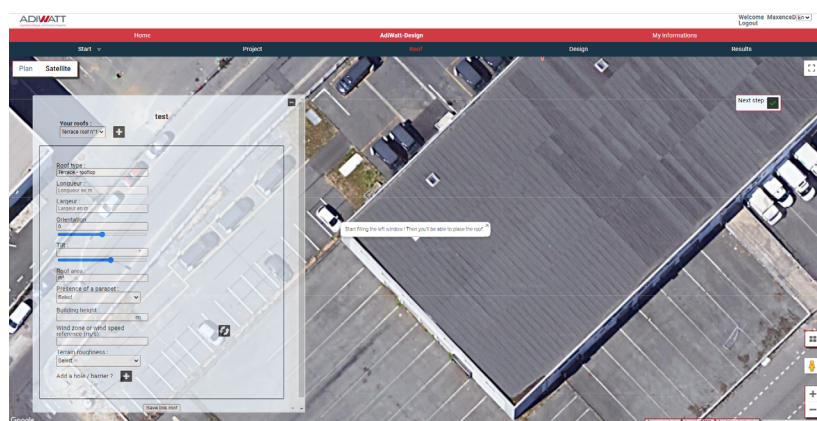
6 Now fill in the table on the left. It includes the information from your roof that is necessary to process the project. This information is crucial for the development of the ballast data calculation note. For the wind zone, refer to the map available by clicking on «? Outside metropolitan France, please fill in the reference wind speed and fill in all the fields.



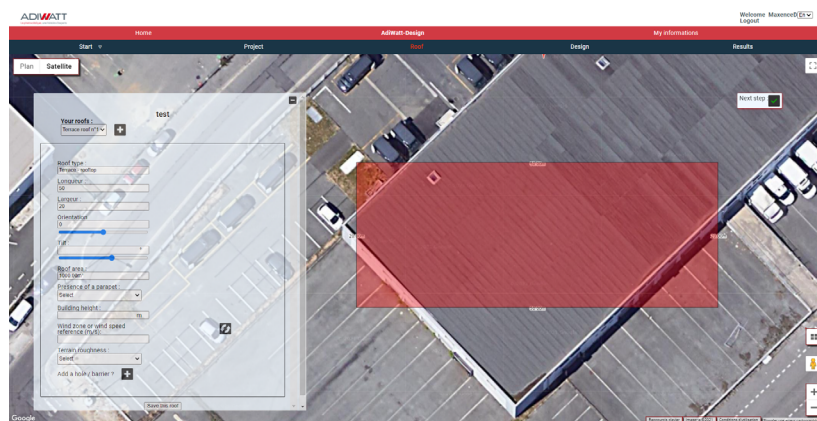
7 If your roof has obstacles, you can design them in a similar way to the roof. Click on the «+» button on the «Add Hole/Obstacle» line and draw your obstacles with the cursor. This step will avoid the installation of modules at these precise locations when configuring the solar field. Suppress the obstacle by clicking on it. Once this step is completed, remember to save the roof.



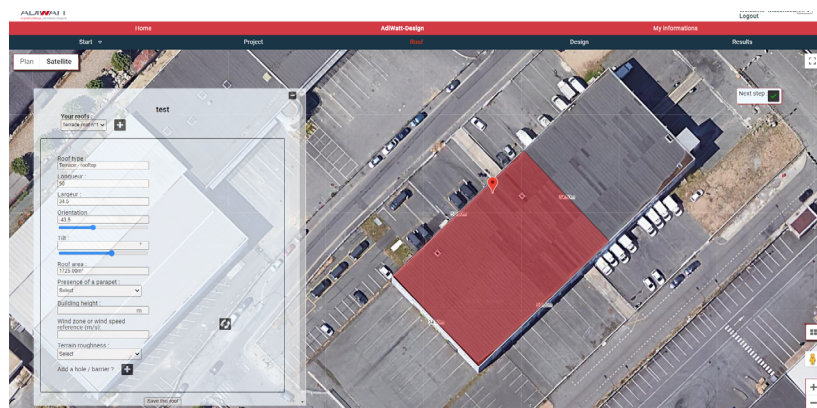
8 In case you have selected the box «rectangular roof»: A window appears with the possibility to enter the length and width values of your roof.



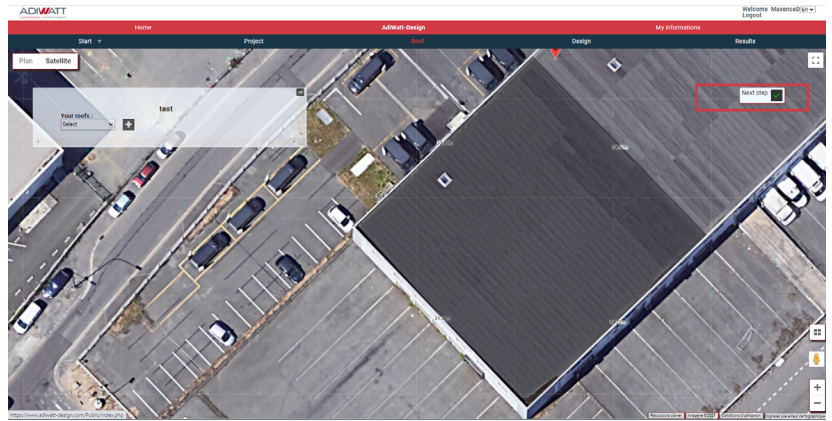
9 Start by filling in the values: **length and width of your roof**. Once you have entered these three values, click on the map to display a rectangle with the chosen dimensions. As long as you don't click a second time, you can move the rectangle. Click to place the roof without worrying about the orientation.



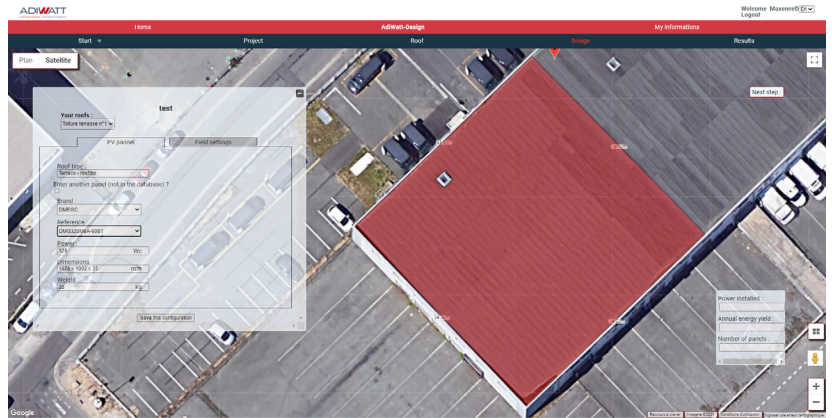
9 With your roof in place on the map, use the «orientation» slider to rotate the roof. If the location is not suitable, click on the roof to move it again. You can change the length and width data at any time to adjust. Finally, fill in the other fields and save the roof.



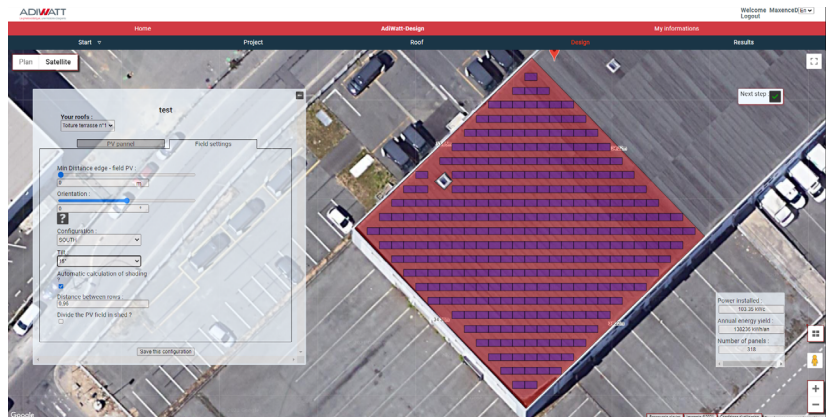
10



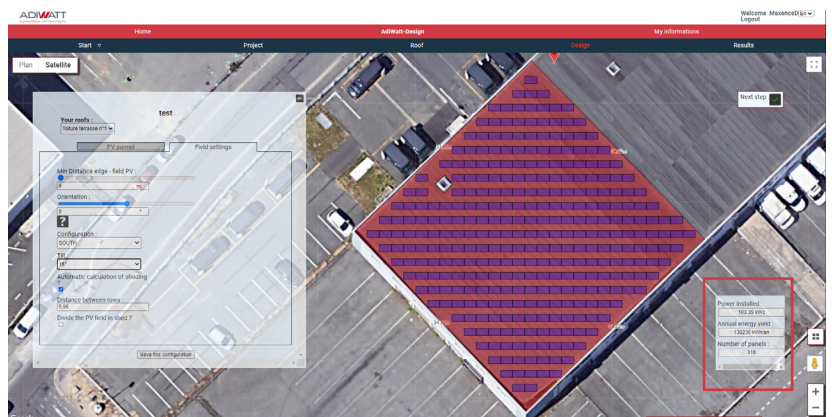
11



12

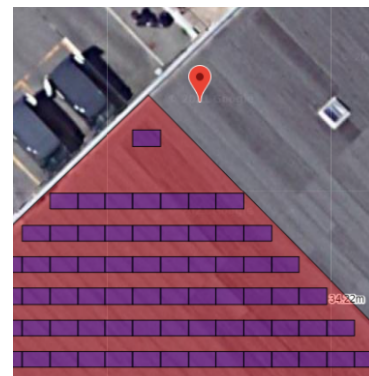


13



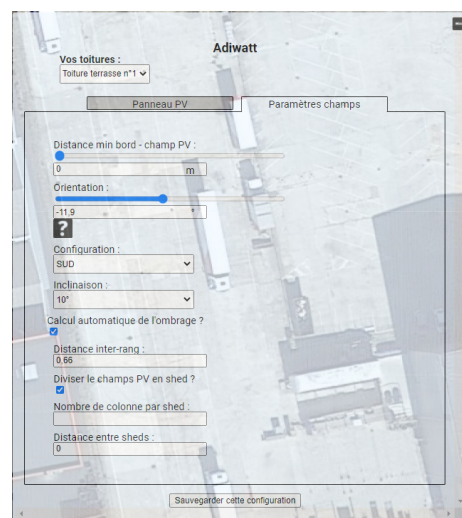
14

You can remove one or more panels by simply clicking on them and selecting «yes» in the window that appears. A simple CTRL+Z will allow you to cancel the action performed.



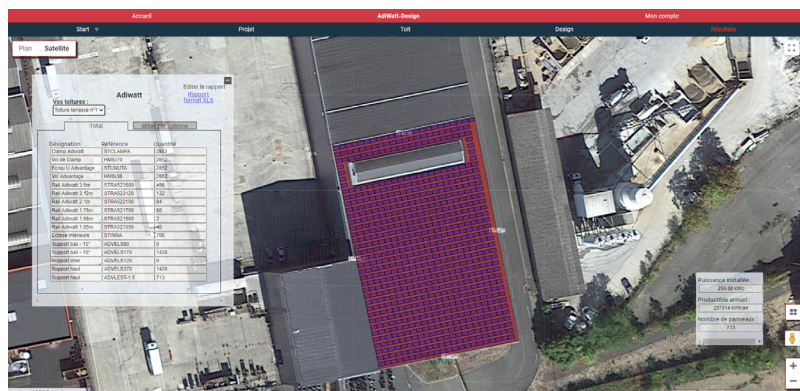
15

You can adjust the distance between the rows of modules but also create shed between your panel columns.



16

When you have finalized the configuration, proceed to the next step, the results. On the software interface, select your roof, you will then have access to the list of supplies for your project. To go further, you can edit the full report to access your project information and obtain a detailed quote and ballast information. An Excel document will give you the location of the material by column.



With this report in your possession, get in touch with our sales department to make your project a reality!

