



MARS-21

AdiWatt Carports

CARPORTS BROCHURE

ADIWATT - LA JUBARDERIE 41270 FONTAINE-RAOUL
PHONE: +33 2 54 23 39 90



AdiWatt

With 10 years of activity in the transformation of steel dedicated to the manufacture of photovoltaic installations on roofs, carports and solar fields, we have managed to become a recognized player in the sector.

During this decade we have worked with the leading actors in energy and construction, capitalizing on our strengths: International presence, integrated design office, efficient industrial tool...

CARPORTS : OPTIMIZE YOUR LAND SPACES

Although essential to the activity of large surfaces or any other structure that receives customers, parking lots and the space they represent are often under-exploited.

Carports systems are an undeniable solution for making these spaces profitable in many aspects.

At AdiWatt, we design and manufacture hot-dipped galvanized steel structures according to your project.

- Reduction of fixed costs: Move towards self-consumption by directly consuming the energy produced
- Positive image: Your commitment to sustainable development becomes tangible
- Customer comfort : Your customers are protected from the heat in summer and from bad weather the rest of the year thanks to a 100% waterproof structure

Your project

All projects are specific and our teams pay special attention to each of them. The expertise we have acquired through our numerous achievements allows us to be at our customers' side from the study to the installation.

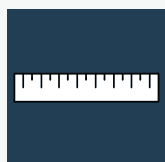
In order for our teams to provide the best possible service, it is essential that certain elements be communicated to them. **The civil engineering package and the electrical connection of the photovoltaic modules are not handled by the AdiWatt teams.**

REQUIRED ELEMENTS FOR THE PROJECT STUDY

A PRE-STUDY IS POSSIBLE WITHOUT THESE ELEMENTS



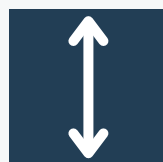
**Module
datasheet**



Layout



Lacation area



Tilt and height



**Parking layout
(obstacles)**



**Buried networks
layout**



**Parking
altimetry**



Soil study



**Building permit
layout**



Specifications



OUR DESIGNS

Centered columns



FEATURES

SPANS DISTANCES	7.5 TO 10 METERS
ROOF TILT	5° TO 15°
SLOPE LENGHT	13 METERS MAX + SUBJECT TO STUDY

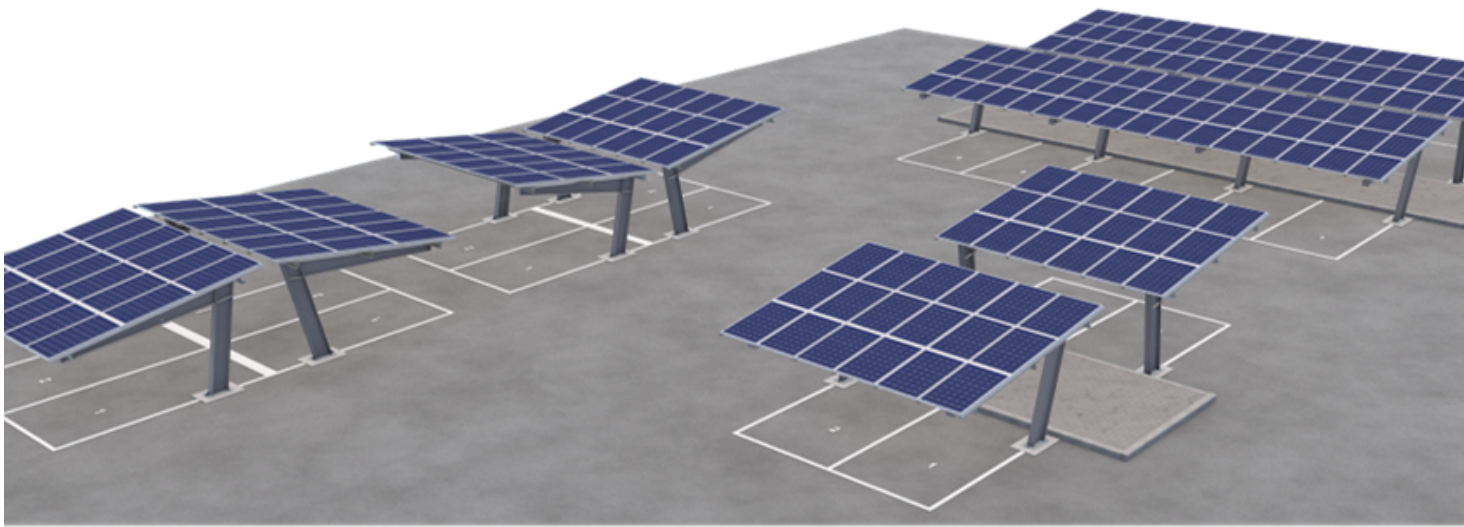
OUR DESIGNS - PROJECTS

Centered columns



OUR DESIGNS

Offset columns



FEATURES

SPANS DISTANCES	5 TO 7.5 METERS
ROOF TILT	5° TO 10°
SLOPE LENGHT	6 METERS MAX

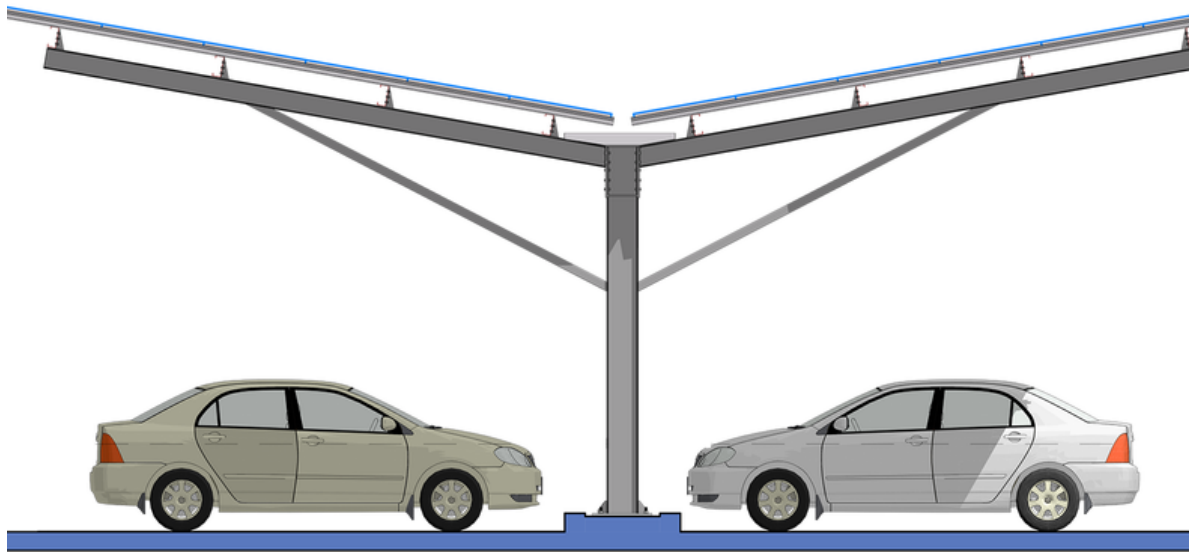
OUR DESIGNS - PROJECTS

Offset columns



OUR DESIGNS

Y Carports



FEATURES

SPANS DISTANCES	7.5 TO 10 METERS
ROOF TILT	5° TO 15°
SLOPE LENGHT	6 MÈTRES MAX PAR RAMPANT

OUR DESIGNS - PROJECTS

Y Carports



OUR DESIGNS

Gantry Carports



FEATURES

SPANS DISTANCES	7.5 TO 10 METERS
ROOF TILT	5° TO 15°
SLOPE LENGHT	10 TO 15 METERS

OUR DESIGNS - PROJECTS

Gantry Carports



OUR DESIGNS

Double Centered Columns



FEATURES

SPANS DISTANCES	7.5 TO 10 METERS
ROOF TILT	5° TO 20°
SLOPE LENGHT	12 TO 20 METERS

OUR DESIGNS - PROJECTS

Double Centered Columns



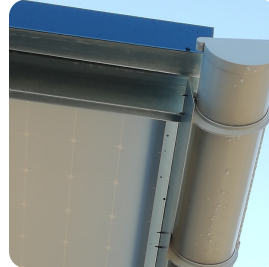
CARPORT ELEMENTS SPECIFICATIONS

ELEMENTS	PROFILE/SECTION	MATERIAL	PROTECTION
PURLINS	PROFIL C / S / Z / SIGMA SECTION CARRÉE RHS	STEEL S355	Z275 OR Z600
COLUMNS	IPE / HEA	STEEL S275	HOT-DIP GALVANIZED STEEL
CROSSBEAM	IPE / HEA / PRS	STEEL S275 / S235	HOT-DIP GALVANIZED STEEL
CROSS BRACING	SQUARE SHS	STEEL S235	HOT-DIP GALVANIZED STEEL
WIND-BRACING	L ANGLE IRON	STEEL S235	HOT-DIP GALVANIZED STEEL
BOLTS AND RODS	M10 TO M24	HIGH RESISTANCE CLASS 8.8	ZINC & STAINLESS STEEL

CARPORTS : OPTIONS

PVC, ALU gutters

Depending on the location of your project and the rainfall, the AdiWatt Design Office can impose aluminium gutters.



Wood covering

You can adapt the architecture of your project to your environment. It is possible for you to plan a wooden cladding for your structure.



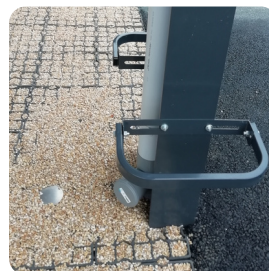
Powder Coating

Possibility of powder coating the posts, crosspieces and braces. Anti-corrosion paint. Several RAL colours available.



Protective hoops

Protect the columns of your carports against the risk of damage due to vehicle traffic. Different models, powder coating of the hoops is possible.



Covers

Practical and aesthetic, the covers combine protection and finish by covering the electrical cables.

Available in aluminium and wood.



CARPORTS : OPTIONS

Inverter support

Specially designed supports to securely hold your inverters. The supports can be powder-coated.



Sides covering

Finishing and reinforcing the waterproofing of the structure with the installation of sheet metal at each end.

Option available for the ridge.



Slope bottom covering

Finishing and reinforcing the waterproofing of the structure with the installation of sheet metal at the bottom of the slope.



No cross-bracing structure

It is possible to mount the carport structure without braces. Discreet brackets are installed to provide support.



Round columns

Selon votre projet, il vous est possible de prévoir l'installation de poteaux ronds.



More informations :