

SOLUTION FOR SANDWICH PANEL ROOF

Optima®

In order to meet the specificities of sandwich panel roofs, AdiWatt has developed and manufactures a fixing solution allowing the installation of framed photovoltaic panels, without damaging the sandwich panel.

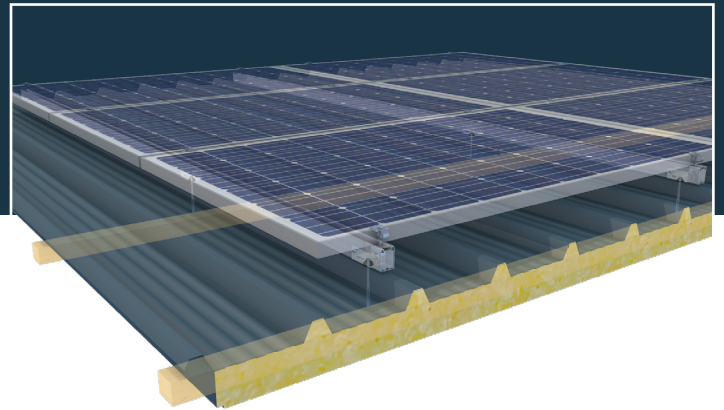
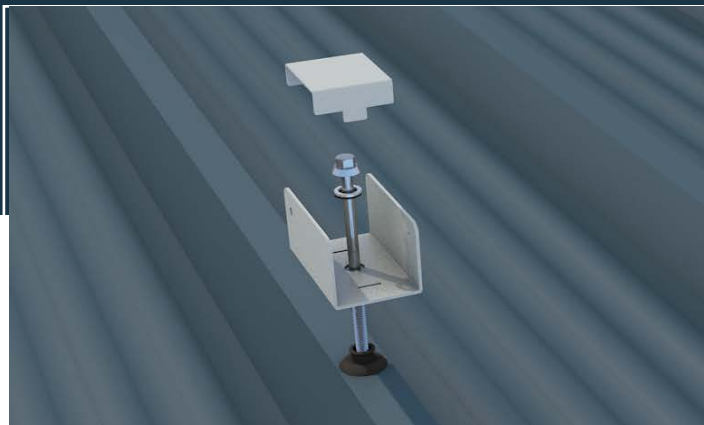


OTHER OPTIMA® SOLUTIONS

Asbestos cement	✓
Kalzip®	✓
Roof tiles	✓
Trapezoidal wave steel	✓

Special features

- Our fastening system for sandwich panel allows quick implementation.
- No effort is applied to the roof thanks to a fixation directly in the frame
- The screws are inserted into a spacer intended to avoid compression of the polyurethane insulation.
- The rails are placed on specific supports universal adjustable in a U shape to guarantee laying flat without distortion.
- The system is applicable in cyclonic areas with the addition of a third rail/column.
- Our solution offers an efficient ventilation under the modules and ensures a better productivity.
- Two washers guarantee a watertight seal at the fixing point.
- Our solutions are designed and manufactured in France.



Technical characteristics

Field of application	Sandwich panel roofs
Weather resistance	Cyclonic zone suitable
Fixation	In the purlin
Type of modules & Orientation	Framed - Landscape
Integration system material	Magnelis®
Screws and bolts	Stainless steel and zinc plated
Grounding	VERITAS test report
Guarantee	10 year
Certification	ETN

Our sales team is at your disposal for the study of your projects