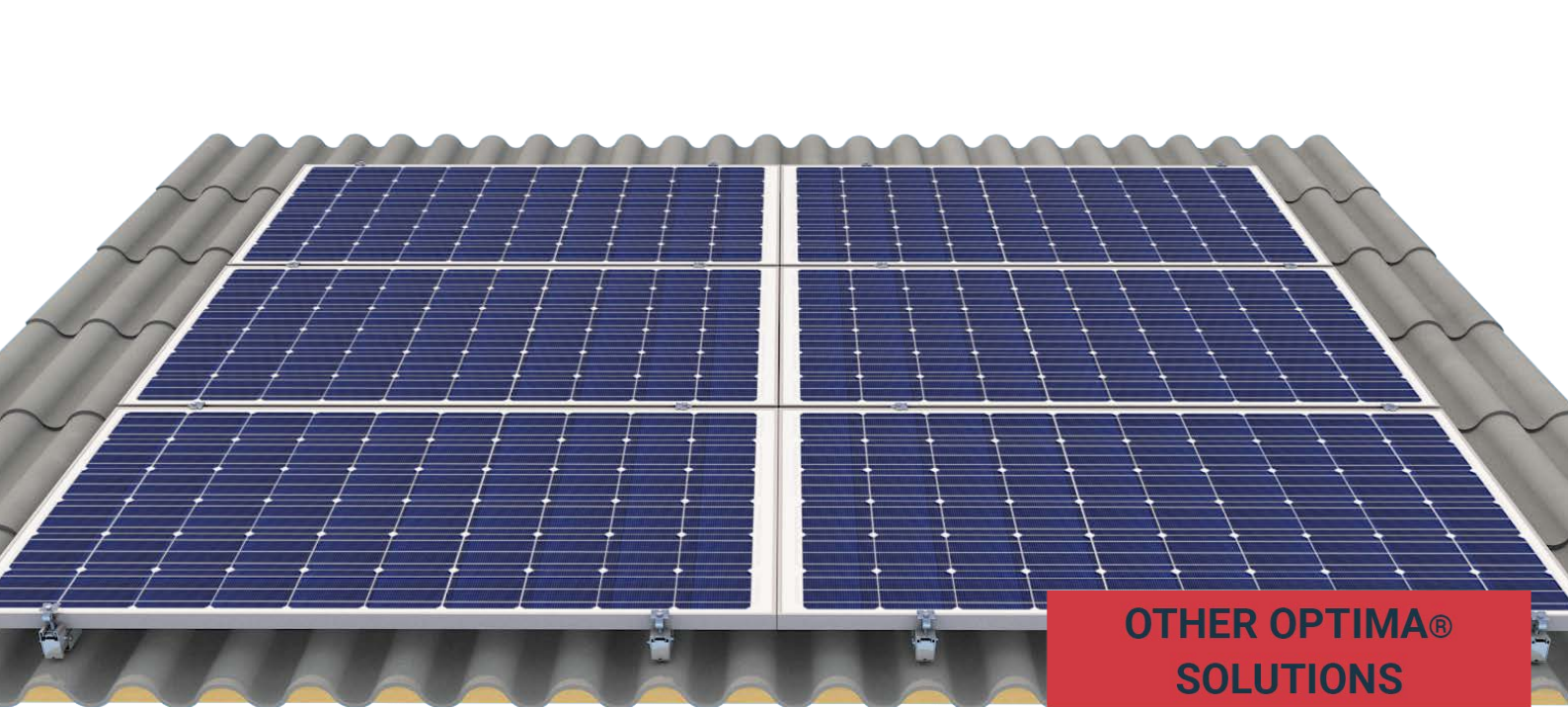


SOLUTION FOR ASBESTOS CEMENT

## Optima®

To meet the specific requirements of asbestos-cement roofs, AdiWatt has developed a fixing system to guarantee the installation of framed photovoltaic modules in landscape mode.



### OTHER OPTIMA® SOLUTIONS

Kalzip®	✓
Sandwich panels	✓
Roof tiles	✓
Trapezoidal wave steel	✓

© La Jubarderie, 41270 Fontaine Raoul

✉ [info@adiwatt.com](mailto:info@adiwatt.com) ☎ 02-54-23-39-90



ISO 9001

# Special features

- Our fastening system for sandwich panel allows quick implementation.
  - No effort is applied to the roof thanks to a fixation directly in the frame
- •The screws are inserted into a spacer intended to avoid compression of the polyurethane insulation.
- •The rails are placed on specific supports universal adjustable in a U shape to guarantee laying flat without distortion. •The system is applicable in cyclonic areas with the addition of a
- The system is applicable in cyclonic areas with the addition of a third rail/ column.
- Our solution offers an efficient ventilation under the modules and ensures a better productivity.
- Two washers guarantee a watertight seal at the fixing point.
- Our solutions are designed and manufactured in France.



## Technical characteristics

Field of application	Asbestos cement roof
Weather resistance	Cyclonic zone suitable
Fixation	In the purlin
Type of modules & Orientation	Framed - Landscape
Integration system material	Magnelis®
Screws and bolts	Stainless steel and zinc plated
Grounding	VERITAS test report
Guarantee	10 year
Certification	ETN

Our sales team is at your disposal for the study of your projects